

**pirhl**  
**APARTMENTS AT VERONA**  
 BLOCK 2301 LOTS 11-17,  
 A PORTION OF LOT 18 AND LOT 19  
 TOWNSHIP OF VERONA, ESSEX  
 COUNTY, NEW JERSEY

OWNER/APPLICANT  
 VERONA LIHTC URBAN RENEWAL LLC  
 5 COMMERCE WAY, SUITE 204  
 HAMILTON, NJ 08691  
 609.751.9664

ARCHITECT  
 WALLACE ROBERTS & TODD, LLC  
 1700 MARKET STREET, SUITE 2800  
 PHILADELPHIA, PA 19103  
 215.732.5215  
 WRTDESIGN.COM

CIVIL ENGINEER  
 ESE CONSULTANTS, INC.  
 100 WILLOW BROOK ROAD, SUITE 200  
 FREEHOLD, NJ 07728  
 732.272.0532

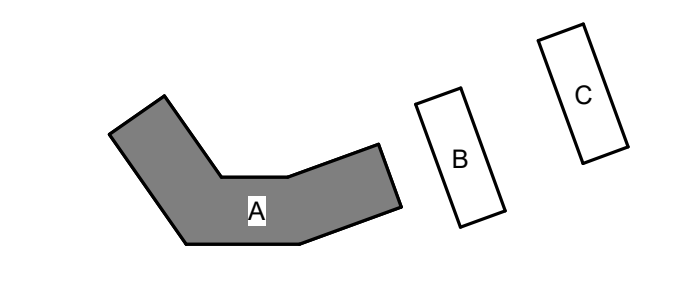
LANDSCAPE ARCHITECT  
 MELILLO + BAUER ASSOCIATES, INC.  
 200 UNION AVENUE  
 BRIELLE, NJ 08730  
 732.528.0664

SUSTAINABILITY  
 INNOVA BUILDING ADVISORS  
 1548 S. 16TH STREET  
 PHILADELPHIA, PA 19146  
 215.446.9945

STRUCTURAL ENGINEER  
 BAKER, INGRAM & ASSOCIATES  
 2 WHITE HORSE PIKE  
 HADDON HEIGHTS, NJ 08035  
 856.310.1491

MEP ENGINEER  
 MCHUGH ENGINEERING & ASSOCIATES  
 136 POPLAR STREET  
 ANSBLER, PA 19002  
 215.641.1158

KEYPLAN



REV #	DATE	DESCRIPTION
	09/30/21	BASIS OF DESIGN
	10/29/21	FINAL SITE PLAN SUBMISSION

SEAL

COPYRIGHT © 2021 - Wallace Roberts & Todd, LLC - ALL RIGHTS RESERVED -  
 All basic designs, arrangements and plans indicated or represented by this drawing  
 and written material appearing herein constitute the original and unpublished work of  
 Wallace Roberts & Todd, LLC and the same may not be duplicated, used or disclosed  
 to any person, firm or corporation for any purpose whatsoever without the written  
 consent of the architect.

**FINAL SITE PLAN SUBMISSION**

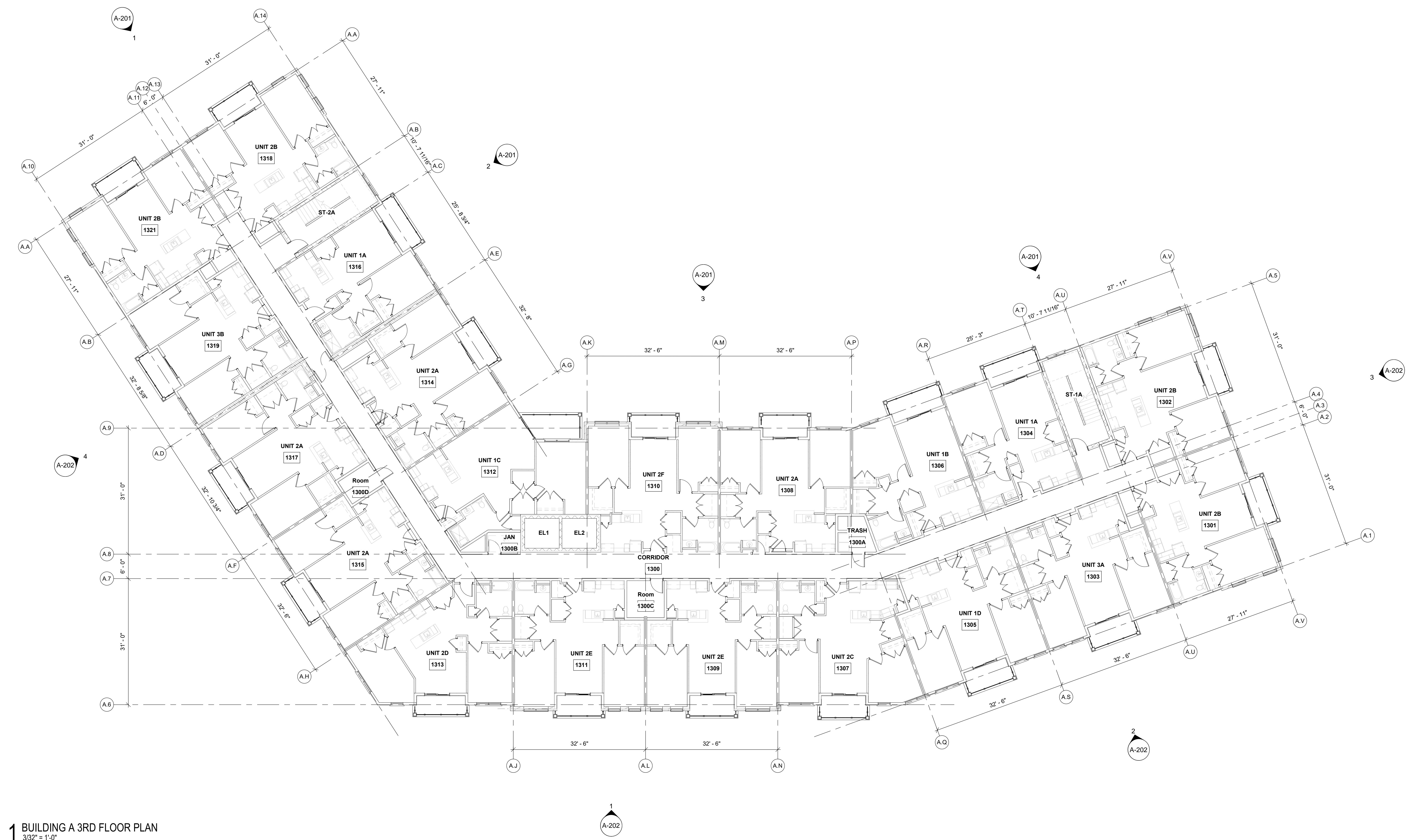
WRT PROJECT # 08423

ISSUE DATE 10/29/2021

SCALE 3/32" = 1'-0"

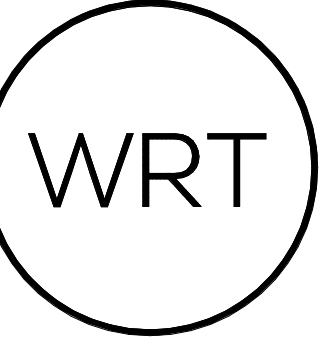
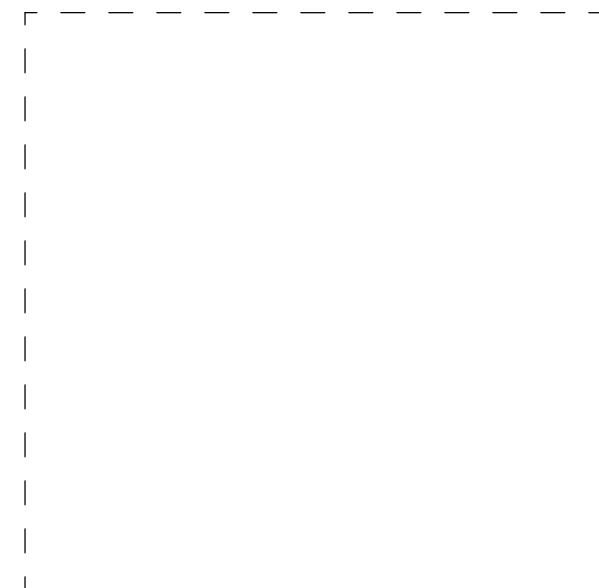
**BUILDING A 3RD FLOOR PLAN**

**A.103**



**1 BUILDING A 3RD FLOOR PLAN**  
 3/32" = 1'-0"

E:\Projects\PIRHL\_VERONA\_A\_01\_FINAL\A103.dwg



**pirhl**  
**APARTMENTS AT VERONA**  
 BLOCK 2301 LOTS 11-17,  
 A PORTION OF LOT 18 AND LOT 19  
 TOWNSHIP OF VERONA, ESSEX  
 COUNTY, NEW JERSEY

OWNER/APPLICANT  
**VERONA LIHTC URBAN RENEWAL LLC**  
 5 COMMERCE WAY, SUITE 204  
 HAMILTON, NJ 08691  
 609.751.9664

ARCHITECT  
**WALLACE ROBERTS & TODD, LLC**  
 1700 MARKET STREET, SUITE 2800  
 PHILADELPHIA, PA 19103  
 215.732.5215  
 WRTDESIGN.COM

CIVIL ENGINEER  
**ESE CONSULTANTS, INC.**  
 100 WILLOW BROOK ROAD, SUITE 200  
 FREEHOLD, NJ 07728  
 732.272.0532

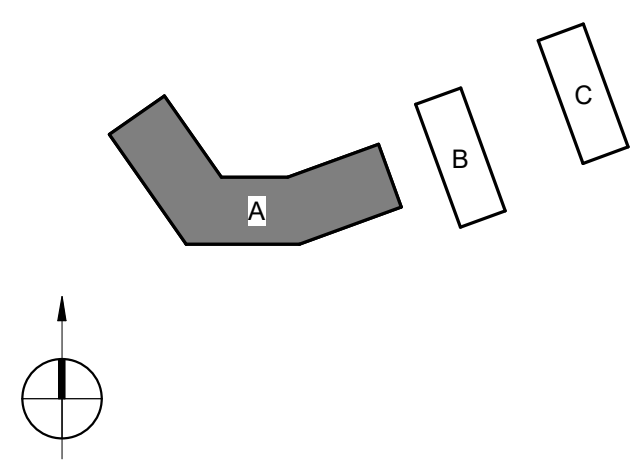
LANDSCAPE ARCHITECT  
**MELILLO + BAUER ASSOCIATES, INC.**  
 200 UNION AVENUE  
 BRIELLE, NJ 08730  
 732.528.0664

SUSTAINABILITY  
**INNOVA BUILDING ADVISORS**  
 1548 S. 16TH STREET  
 PHILADELPHIA, PA 19146  
 215.446.9945

STRUCTURAL ENGINEER  
**BAKER, INGRAM & ASSOCIATES**  
 2 WHITE HORSE PIKE  
 HADDON HEIGHTS, NJ 08035  
 856.310.1491

MEP ENGINEER  
**MCHUGH ENGINEERING & ASSOCIATES**  
 136 POPLAR STREET  
 ANSBLER, PA 19002  
 215.641.1158

KEYPLAN



REV #	DATE	DESCRIPTION
	09/30/21	BASIS OF DESIGN
	10/29/21	FINAL SITE PLAN SUBMISSION

SEAL

COPYRIGHT © 2021 - Wallace Roberts & Todd, LLC - ALL RIGHTS RESERVED -  
 All basic designs, arrangements and plans indicated or represented by this drawing  
 and written material appearing herein constitute the original and unpublished work of  
 Wallace Roberts & Todd, LLC and the same may not be duplicated, used or disclosed  
 to any person, firm or corporation for any purpose whatsoever without the written  
 consent of the architect.

**FINAL SITE PLAN SUBMISSION**

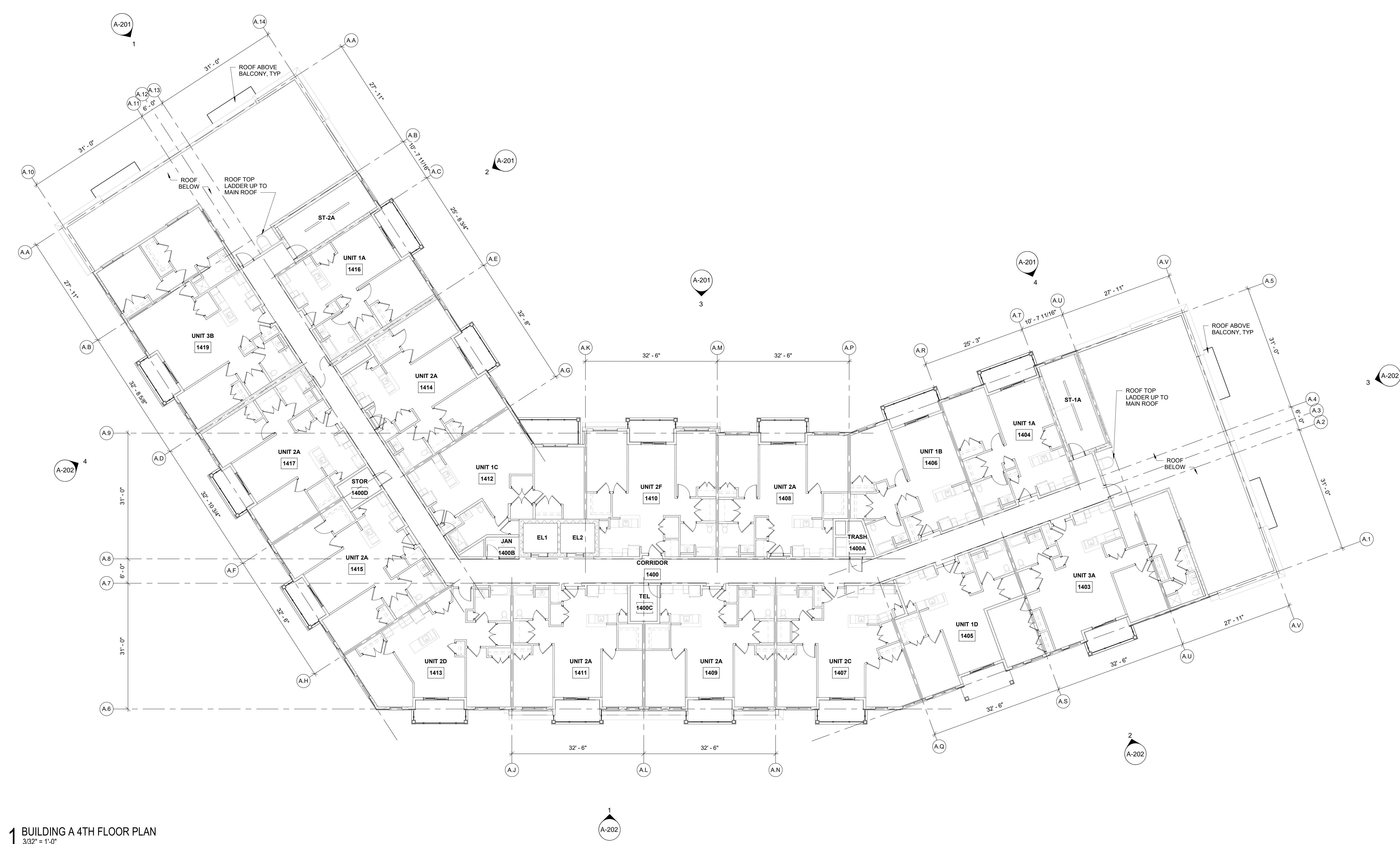
WRT PROJECT # 08423

ISSUE DATE 10/29/2021

SCALE 3/32" = 1'-0"

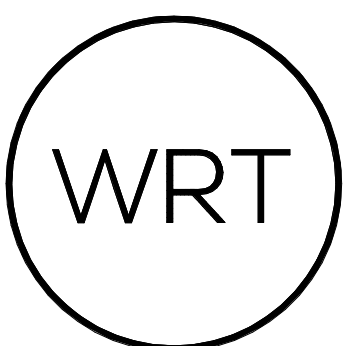
BUILDING A 4TH FLOOR PLAN

**A.104**



**1 BUILDING A 4TH FLOOR PLAN**  
 3/32" = 1'-0"

E:\Projects\PIRHL\_VERONA\_A\_01\_FINAL\A104.dwg



**pirhl**  
**APARTMENTS AT VERONA**

BLOCK 2301 LOTS 11-17,  
 A PORTION OF LOT 18 AND LOT 19  
 TOWNSHIP OF VERONA, ESSEX  
 COUNTY, NEW JERSEY

OWNER/APPLICANT  
 VERONA LIHTC URBAN RENEWAL LLC  
 5 COMMERCE WAY, SUITE 204  
 HAMILTON, NJ 08691  
 609.751.9664

ARCHITECT  
 WALLACE ROBERTS & TODD, LLC  
 1700 MARKET STREET, SUITE 2800  
 PHILADELPHIA, PA 19103  
 215.732.5215  
 WRTDESIGN.COM

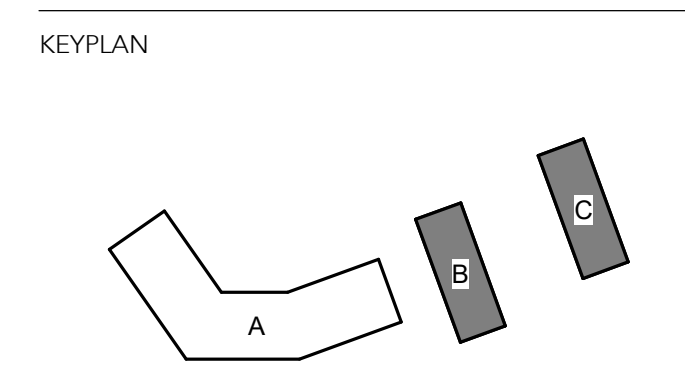
CIVIL ENGINEER  
 ESE CONSULTANTS, INC.  
 100 WILLOW BROOK ROAD, SUITE 200  
 FREEHOLD, NJ 07728  
 732.272.0532

LANDSCAPE ARCHITECT  
 MELILLO + BAUER ASSOCIATES, INC.  
 200 UNION AVENUE  
 BRIELLE, NJ 08730  
 732.528.0664

SUSTAINABILITY  
 INNOVA BUILDING ADVISORS  
 1548 S. 16TH STREET  
 PHILADELPHIA, PA 19146  
 215.446.9945

STRUCTURAL ENGINEER  
 BAKER, INGRAM & ASSOCIATES  
 2 WHITE HORSE PIKE  
 HADDON HEIGHTS, NJ 08035  
 856.310.1491

MEP ENGINEER  
 MCHUGH ENGINEERING & ASSOCIATES  
 136 POPLAR STREET  
 ANSBLER, PA 19002  
 215.641.1158



REV #	DATE	DESCRIPTION
09/30/21		BASIS OF DESIGN
10/29/21		FINAL SITE PLAN SUBMISSION

SEAL

COPYRIGHT © 2020 - Wallace Roberts & Todd, LLC - ALL RIGHTS RESERVED -  
 All basic designs, arrangements and plans indicated or represented by this drawing  
 and written material appearing herein constitute the original and unpublished work of  
 Wallace Roberts & Todd, LLC and the same may not be duplicated, used or disclosed  
 to any person, firm or corporation for any purpose whatsoever without the written  
 consent of the architect.

**FINAL SITE PLAN SUBMISSION**

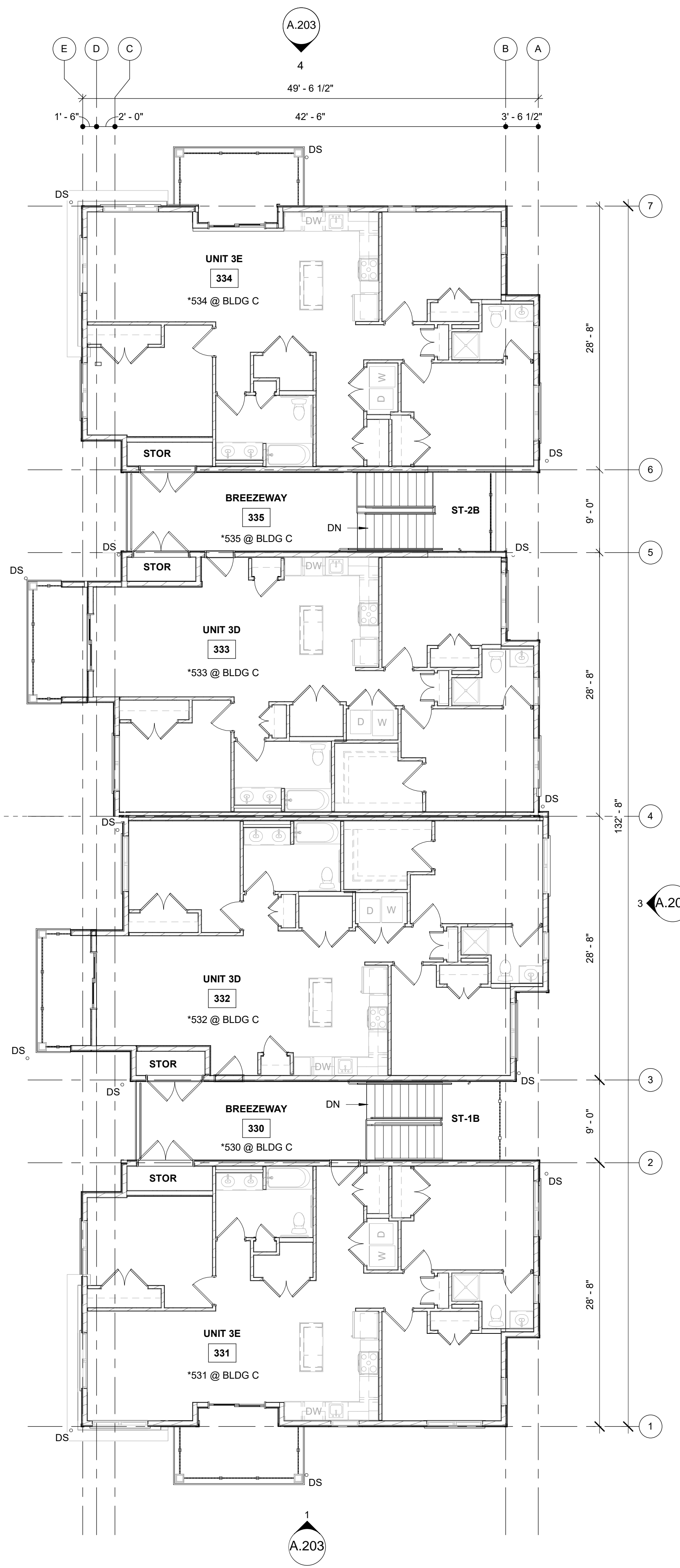
WRT PROJECT # 08423

ISSUE DATE 10/29/2021

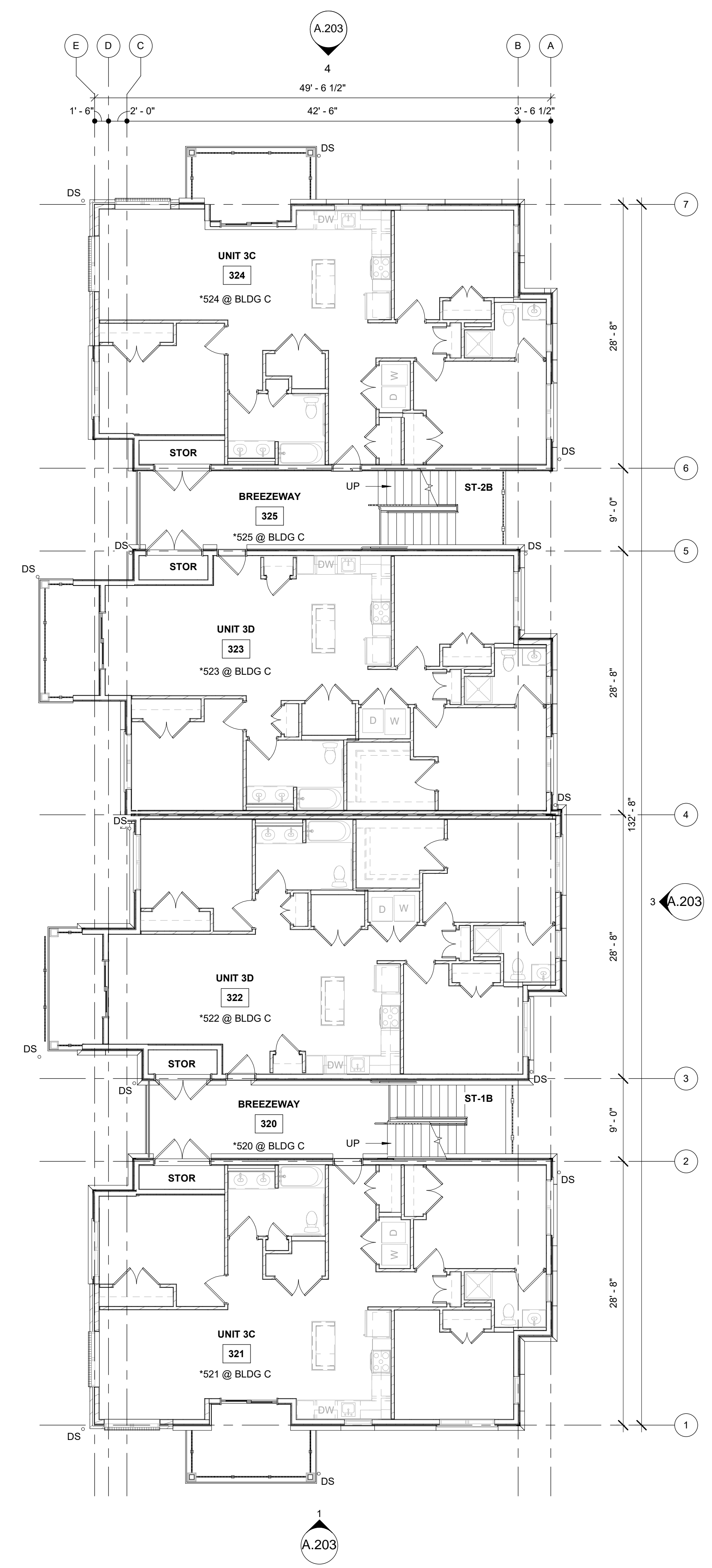
SCALE 1/8" = 1'-0"

BUILDING B (BUILDING C SIM)  
 FLOOR PLANS

**A.106**



**2** BLDG B - 3RD FLOOR PLAN (BLDG C SIM)  
 1/8" = 1'-0"



**1** BLDG B - 2ND FLOOR PLAN (BLDG C SIM)  
 1/8" = 1'-0"

E:\Revit\A21\PIRHL\_VERONA\_BLDG\_C-21\_10292021.dwg

**GENERAL NOTES - ELEVATIONS:**

1. CONTRACTOR TO FURNISH AND INSTALL ALL EXTERIOR SIGNAGE INCLUDING ADDRESS SIGNS AND CODE REQUIRED SIGNAGE.
2. TRIM PROFILES - REFER TO SECTION DETAILS FOR MORE INFORMATION.
3. SEE SITE PLAN AND CIVIL DRAWINGS FOR GRADING INFORMATION.
4. SEE BUILDING SECTIONS FOR ROOF HEIGHTS.
5. MATERIALS AND REFERENCES CALLED OUT ARE TYPICAL FOR ALL ELEVATIONS UNO.
6. AT ALL ACCESSIBLE ENTRANCES SIDEWALKS - SLAB AT CONCRETE PATIOS AND RAMPS TO BE FLUSH WITH DOORS. MAINTAIN A POSITIVE SLOPE AWAY FROM THE BUILDING AND ENTRANCE DOORS. COORDINATE WITH CIVIL DRAWINGS.
7. ALUMINUM GUTTERS, SCUPPERS AND DOWNSPOUTS. SEE OVERALL FLOOR PLANS AND NOTES FOR DOWNSPOUTS LOCATIONS, SIZING AND ADDITIONAL INFORMATION; COORDINATE WITH CIVIL DWGS.
8. SEE A-603 FOR ALL TEMPERED GLAZING WINDOW TYPES COORLIATING TO TAGS ON ELEVATION SHEETS. SEE A-602 FOR ALL TEMPERED GLAZING DOOR TYPES.

WRT

**pirhl**  
**APARTMENTS AT VERONA**

BLOCK 2301 LOTS 11-17,  
 A PORTION OF LOT 18 AND LOT 19  
 TOWNSHIP OF VERONA, ESSEX  
 COUNTY, NEW JERSEY

OWNER/APPLICANT  
 VERONA LIHTC URBAN RENEWAL LLC

5 COMMERCE WAY, SUITE 204  
 HAMILTON, NJ 08691  
 609.751.9664

ARCHITECT  
**WALLACE ROBERTS & TODD, LLC**  
 1700 MARKET STREET, SUITE 2800  
 PHILADELPHIA, PA 19103  
 215.732.5215  
 WRTDESIGN.COM

CIVIL ENGINEER  
**ESE CONSULTANTS, INC.**  
 100 WILLOW BROOK ROAD, SUITE 200  
 FREEHOLD, NJ 07728  
 732.272.0532

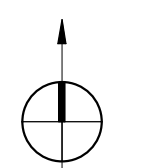
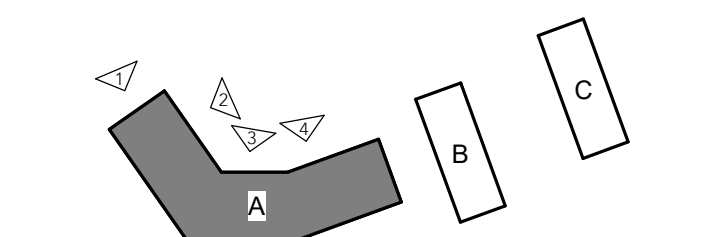
LANDSCAPE ARCHITECT  
**MELILLO + BAUER ASSOCIATES, INC.**  
 200 UNION AVENUE  
 BRIELLE, NJ 08730  
 732.528.0664

SUSTAINABILITY  
**INNOVA BUILDING ADVISORS**  
 1548 S. 16TH STREET  
 PHILADELPHIA, PA 19146  
 215.446.9945

STRUCTURAL ENGINEER  
**BAKER, INGRAM & ASSOCIATES**  
 2 WHITE HORSE PIKE  
 HADDON HEIGHTS, NJ 08035  
 856.310.1491

MEP ENGINEER  
**MCHUGH ENGINEERING & ASSOCIATES**  
 136 POPLAR STREET  
 ANSBLER, PA 19002  
 215.641.1158

KEYPLAN



REV #	DATE	DESCRIPTION
	09/30/21	BASIS OF DESIGN
	10/29/21	FINAL SITE PLAN SUBMISSION

SEAL

COPYRIGHT © 2020 - Wallace Roberts & Todd, LLC - ALL RIGHTS RESERVED -  
 All basic designs, arrangements and plans indicated or represented by this drawing  
 and written material appearing herein constitute the original and unpublished work of  
 Wallace Roberts & Todd, LLC and the same may not be duplicated, used or disclosed  
 to any person, firm or corporation for any purpose whatsoever without the written  
 consent of the architect.

**FINAL SITE PLAN SUBMISSION**

WRT PROJECT # 08423

ISSUE DATE 10/29/2021

SCALE As indicated

**BUILDING A ELEVATIONS**

**A.201**



**4 BUILDING A NORTHEAST ELEVATION**  
 1/8" = 1'-0"



**3 BUILDING A NORTH ELEVATION**  
 1/8" = 1'-0"



**2 BUILDING A NORTHWEST ELEVATION**  
 1/8" = 1'-0"

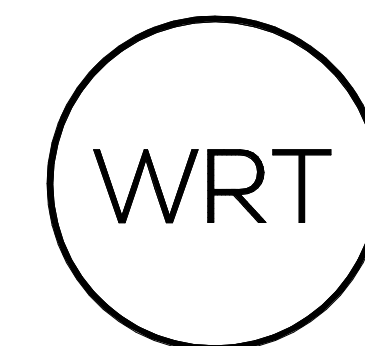


**1 BUILDING A WEST ELEVATION**  
 1/8" = 1'-0"

E:\RW\08423\PIRHL\_VERONA\_A\_01\_10292021.dwg

**GENERAL NOTES - ELEVATIONS:**

1. CONTRACTOR TO FURNISH AND INSTALL ALL EXTERIOR SIGNAGE INCLUDING ADDRESS SIGNS AND CODE REQUIRED SIGNAGE.
2. TRIM PROFILES - REFER TO SECTION DETAILS FOR MORE INFORMATION.
3. SEE SITE PLAN AND CIVIL DRAWINGS FOR GRADING INFORMATION.
4. SEE BUILDING SECTIONS FOR ROOF HEIGHTS.
5. MATERIALS AND REFERENCES CALLED OUT ARE TYPICAL FOR ALL ELEVATIONS UNO.
6. AT ALL ACCESSIBLE ENTRANCES SIDEWALKS - SLAB AT CONCRETE PATIOS AND RAMPS TO BE FLUSH WITH DOORS. MAINTAIN A POSITIVE SLOPE AWAY FROM THE BUILDING AND ENTRANCE DOORS. COORDINATE WITH CIVIL DRAWINGS.
7. ALUMINUM GUTTERS, SCUPPERS AND DOWNSPOUTS. SEE OVERALL FLOOR PLANS AND NOTES FOR DOWNSPOUTS LOCATIONS, SIZING AND ADDITIONAL INFORMATION; COORDINATE WITH CIVIL DWGS.
8. SEE A-603 FOR ALL TEMPERED GLAZING WINDOW TYPES COORLIATING TO TAGS ON ELEVATION SHEETS. SEE A-602 FOR ALL TEMPERED GLAZING DOOR TYPES.



**pirhl**  
**APARTMENTS AT VERONA**  
 BLOCK 2301 LOTS 11-17,  
 A PORTION OF LOT 18 AND LOT 19  
 TOWNSHIP OF VERONA, ESSEX  
 COUNTY, NEW JERSEY

OWNER/APPLICANT  
**VERONA LIHTC URBAN RENEWAL LLC**  
 5 COMMERCE WAY, SUITE 204  
 HAMILTON, NJ 08691  
 609.751.9664

ARCHITECT  
**WALLACE ROBERTS & TODD, LLC**  
 1700 MARKET STREET, SUITE 2800  
 PHILADELPHIA, PA 19103  
 215.732.5215  
 WRTDESIGN.COM

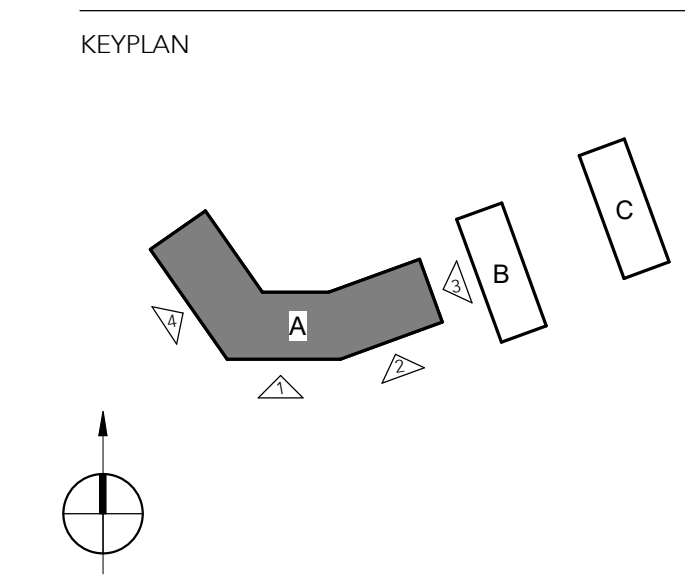
CIVIL ENGINEER  
**ESE CONSULTANTS, INC.**  
 100 WILLOW BROOK ROAD, SUITE 200  
 FREEHOLD, NJ 07728  
 732.272.0532

LANDSCAPE ARCHITECT  
**MELILLO + BAUER ASSOCIATES, INC.**  
 200 UNION AVENUE  
 BRIELLE, NJ 08730  
 732.528.0664

SUSTAINABILITY  
**INNOVA BUILDING ADVISORS**  
 1548 S. 16TH STREET  
 PHILADELPHIA, PA 19146  
 215.446.9945

STRUCTURAL ENGINEER  
**BAKER, INGRAM & ASSOCIATES**  
 2 WHITE HORSE PIKE  
 HADDON HEIGHTS, NJ 08035  
 856.310.1491

MEP ENGINEER  
**MCHUGH ENGINEERING & ASSOCIATES**  
 136 POPLAR STREET  
 ANSELBOR, PA 19002  
 215.641.1158



REV #	DATE	DESCRIPTION
	09/30/21	BASIS OF DESIGN
	10/29/21	FINAL SITE PLAN SUBMISSION

SEAL

COPYRIGHT © 2020 - Wallace Roberts & Todd, LLC - ALL RIGHTS RESERVED -  
 All basic designs, arrangements and plans indicated or represented by this drawing  
 and written material appearing herein constitute the original and unpublished work of  
 Wallace Roberts & Todd, LLC and the same may not be duplicated, used or disclosed  
 to any person, firm or corporation for any purpose whatsoever without the written  
 consent of the architect.

**FINAL SITE PLAN SUBMISSION**

WRT PROJECT # 08423  
 ISSUE DATE 10/29/2021

SCALE 1/8" = 1'-0"  
**BUILDING A ELEVATIONS**

**A.202**



**4 BUILDING A SOUTHWEST ELEVATION**  
 1/8" = 1'-0"



**3 BUILDING A EAST ELEVATION**  
 1/8" = 1'-0"



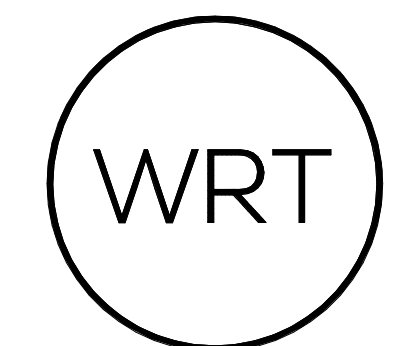
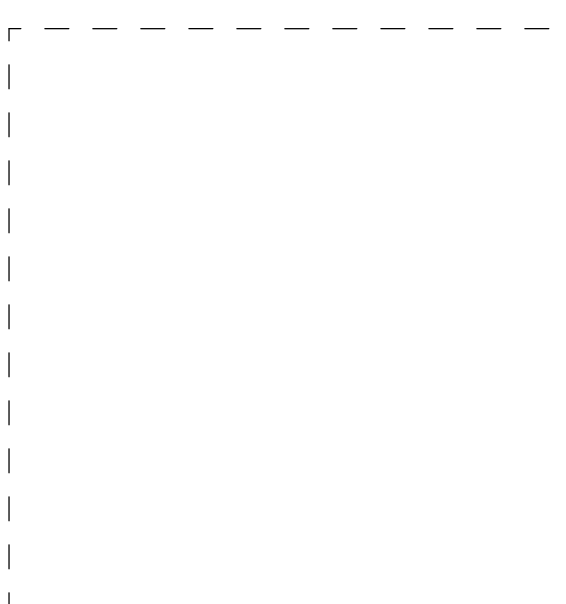
**2 BUILDING A SOUTHEAST ELEVATION**  
 1/8" = 1'-0"

**1 BUILDING A SOUTH ELEVATION**  
 1/8" = 1'-0"

E:\Projects\PIRHL\_VERONA\_A\_01\_102021\WRT\A.202

**GENERAL NOTES - ELEVATIONS:**

1. CONTRACTOR TO FURNISH AND INSTALL ALL EXTERIOR SIGNAGE INCLUDING ADDRESS SIGNS AND CODE REQUIRED SIGNAGE.
2. TRIM PROFILES - REFER TO SECTION DETAILS FOR MORE INFORMATION.
3. SEE SITE PLAN AND CIVIL DRAWINGS FOR GRADING INFORMATION.
4. SEE BUILDING SECTIONS FOR ROOF HEIGHTS.
5. MATERIALS AND REFERENCES CALLED OUT ARE TYPICAL FOR ALL ELEVATIONS UNO
6. AT ALL ACCESSIBLE ENTRANCES SIDEWALKS - SLAB AT CONCRETE PATIOS AND RAMPS TO BE FLUSH WITH DOORS. MAINTAIN A POSITIVE SLOPE AWAY FROM THE BUILDING AND ENTRANCE DOORS. COORDINATE WITH CIVIL DRAWINGS.
7. ALUMINUM GUTTERS, SCUPPERS AND DOWNSPOUTS. SEE OVERALL FLOOR PLANS AND NOTES FOR DOWNSPOUTS LOCATIONS, SIZING AND ADDITIONAL INFORMATION; COORDINATE WITH CIVIL DWGS.
8. SEE A-603 FOR ALL TEMPERED GLAZING WINDOW TYPES COORLIATING TO TAGS ON ELEVATION SHEETS. SEE A-602 FOR ALL TEMPERED GLAZING DOOR TYPES.



**pirhl**  
**APARTMENTS AT VERONA**  
 BLOCK 2301 LOTS 11-17,  
 A PORTION OF LOT 18 AND LOT 19  
 TOWNSHIP OF VERONA, ESSEX  
 COUNTY, NEW JERSEY

OWNER/APPLICANT  
**VERONA LIHTC URBAN RENEWAL LLC**  
 5 COMMERCE WAY, SUITE 204  
 HAMILTON, NJ 08691  
 609.751.9664

ARCHITECT  
**WALLACE ROBERTS & TODD, LLC**  
 1700 MARKET STREET, SUITE 2800  
 PHILADELPHIA, PA 19103  
 215.732.5215  
 WRTDESIGN.COM

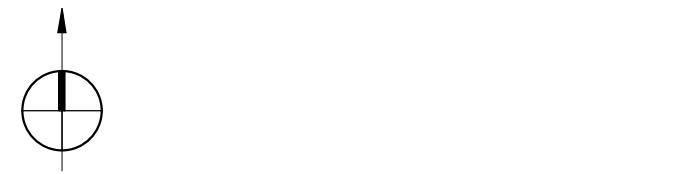
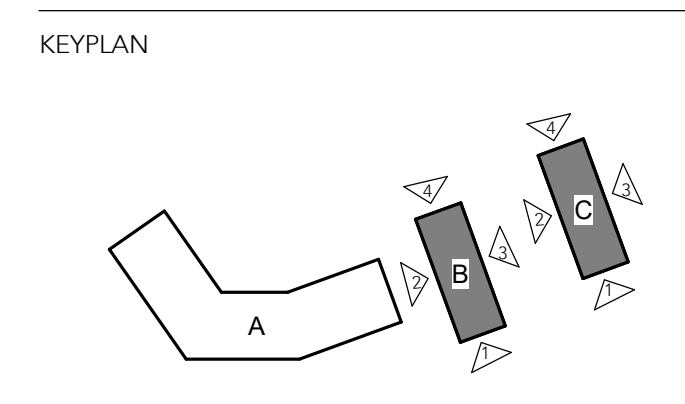
CIVIL ENGINEER  
**ESE CONSULTANTS, INC.**  
 100 WILLOW BROOK ROAD, SUITE 200  
 FREEHOLD, NJ 07728  
 732.272.0532

LANDSCAPE ARCHITECT  
**MELILLO + BAUER ASSOCIATES, INC.**  
 200 UNION AVENUE  
 BRIELLE, NJ 08570  
 732.528.0664

SUSTAINABILITY  
**INNOVA BUILDING ADVISORS**  
 1548 S. 16TH STREET  
 PHILADELPHIA, PA 19146  
 215.446.9945

STRUCTURAL ENGINEER  
**BAKER, INGRAM & ASSOCIATES**  
 2 WHITE HORSE PIKE  
 HADDON HEIGHTS, NJ 08035  
 856.310.1491

MEP ENGINEER  
**MCHUGH ENGINEERING & ASSOCIATES**  
 136 POPLAR STREET  
 ANSELBER, PA 19002  
 215.641.1158



REV #	DATE	DESCRIPTION
	09/30/21	BASIS OF DESIGN
	10/29/21	FINAL SITE PLAN SUBMISSION

SEAL

COPYRIGHT © 2020 - Wallace Roberts & Todd, LLC - ALL RIGHTS RESERVED -  
 All basic designs, arrangements and plans indicated or represented by this drawing  
 and written material appearing herein constitute the original and unpublished work of  
 Wallace Roberts & Todd, LLC and the same may not be duplicated, used or disclosed  
 to any person, firm or corporation for any purpose whatsoever without the written  
 consent of the architect.

**FINAL SITE PLAN SUBMISSION**

WRT PROJECT # 08423  
 ISSUE DATE 10/29/2021

SCALE 1/8" = 1'-0"  
**BUILDING B (BUILDING C)  
 ELEVATIONS**

**A.203**



**3 ELEVATION BLDG B - EAST (BLDG C - WEST, SIM)**  
 1/8" = 1'-0"

**4 ELEVATION BLDG B - NORTH (BLDG C - SOUTH, SIM)**  
 1/8" = 1'-0"



**1 ELEVATION BLDG B - SOUTH (BLDG C - NORTH, SIM)**  
 1/8" = 1'-0"

**2 ELEVATION BLDG B - WEST (BLDG C - EAST, SIM)**  
 1/8" = 1'-0"